

# **INDIA'S ELECTRICITY DEMAND FALLS DURING AUGUST – DECEMBER 2019**

**Prepared by:**            **1. K. Asokan, Director, InSDES, Shoranur**  
                                  **2. P. Subhash, InSDES, Shoranur**

All India power Consumption during August to December 2019 are lower than that during the same period in the year 2018. The maximum reduction of 12.77% occurred during October 2019.

The category wise share of Electricity consumption in India is as follows <sup>1</sup>:

Industries	: 41.5%	Agricultural	: 18.0%
Residential	: 24.1%	Commercial	: 8.5%
Transport	: 1.48%	Others	: 6.45%

As Industrial and Agricultural Consumption put together accounts to nearly 60% of total consumption, any reduction in this will severely affect the overall consumption.

Electricity demand is an indicator of GDP. Slowdown in Electricity consumption can be attributed to the slowdown in the Production sector. India's overall Economic growth is 4.5% in the Q<sub>2</sub> (July - September) of Financial Year 2019-20 (This is the lowest since 2013) and 4.7% in the Quarter ending December 2019<sup>2</sup>. The percentage of Annual Electrical Energy demand growth during 2019 is 1.29 only, compared to the Compounded Annual Growth Rate (CAGR) of 6.34% for the period 2010-18.

The states which experienced more than 15% reduction in Electricity Consumption during October 2019 compared to October 2018 are Madhya Pradesh ( 28.9), Telengana ( 24.9 ), Orissa (22.5), Maharashtra ( 21.2 ) Karnataka ( 19.4 ) and Gujarat ( 18.8 ).

Good rainfall and prolonged rainy season in 2019 might also have led to reduction in demand in Agricultural sector and reduction in cooling requirement in Domestic and Commercial sector.

A detailed analysis is possible only after obtaining the month wise / Category wise consumption for the years 2018 and 2019.

Details of month wise All India Electricity Availability and Peak Demand met for the past 10 years (2010-2019) and details of power availability and demand met for May to December of 2018 and 2019 in respect of some of the major power consuming states in our country are appended.

---

### APPENDIX<sup>3</sup>

#### Chart 1

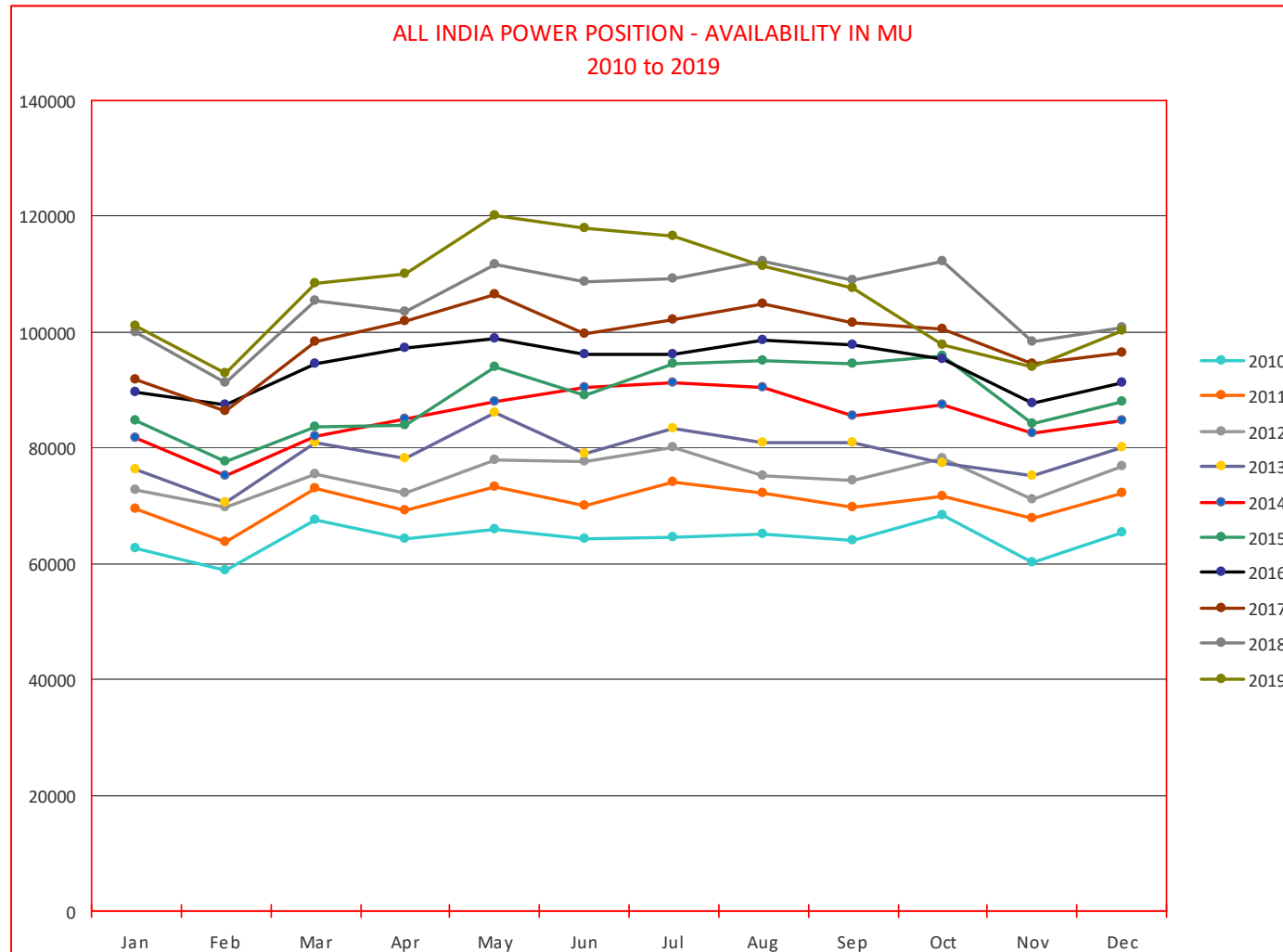


Chart 2

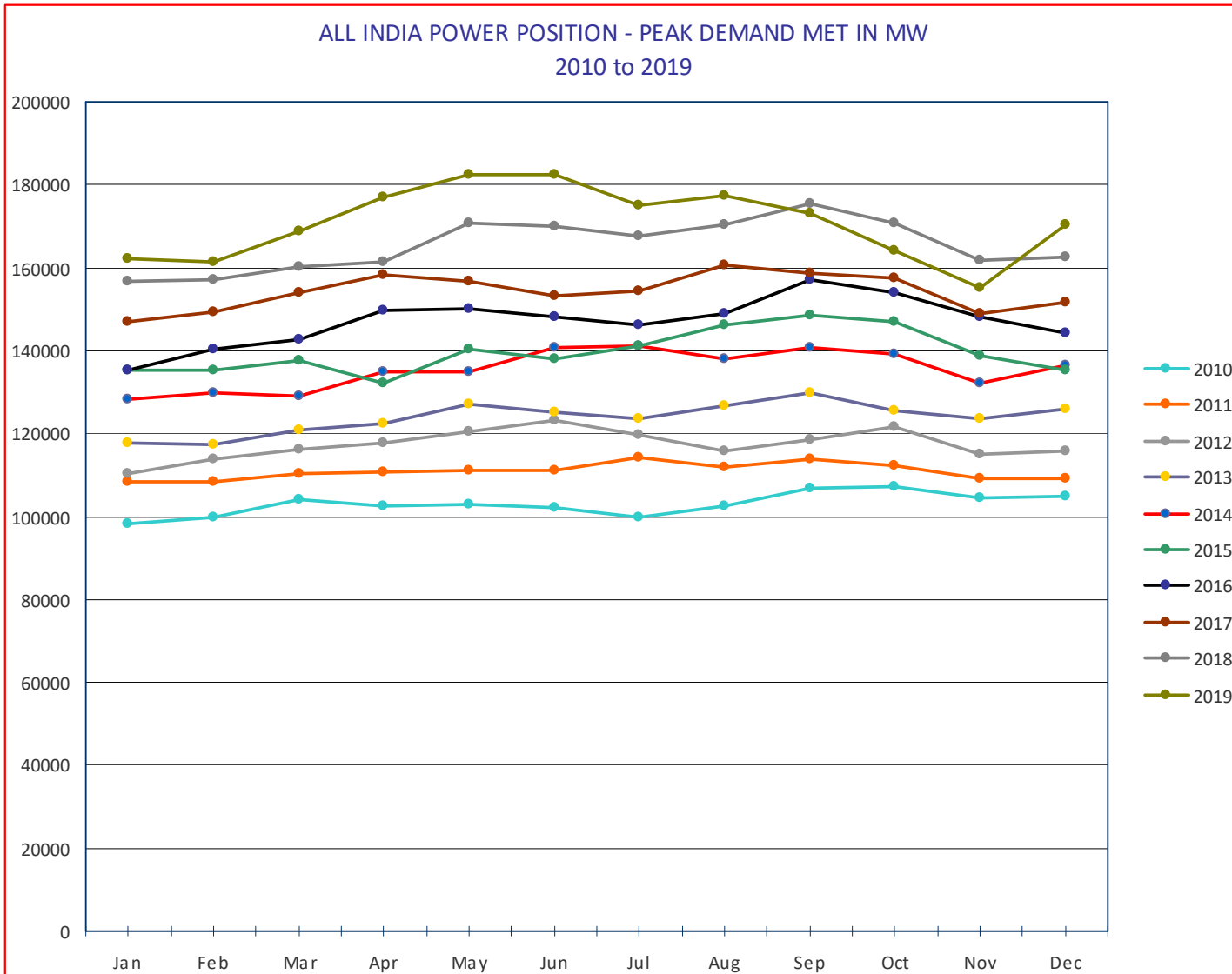


Table 1

Sheet 1/2

ALL INDIA POWER AVAILABILITY MU												
	2010		2011		2012		2013		2014		2015	
Month	AVAILABILITY Y	DEFICI T %	AVAILABILITY Y	DEFICI T %	AVAILABILITY Y	DEFICI T %	AVAILABILITY Y	DEFICI T %	AVAILABILITY Y	DEFICI T %	AVAILABILITY Y	DEFICI T %
Jan	62766	10.72	69532	7.89	72704	9.38	76276	9.91	81785	3.30	84640	2.89
Feb	58906	10.20	63772	7.66	69752	10.65	70549	7.98	75187	3.83	77499	2.52
Mar	67664	11.88	72888	7.71	75440	10.06	80939	8.29	82075	3.63	83629	2.11
Apr	64306	14.55	69187	7.56	72138	8.15	78293	8.11	84920	4.43	83852	2.22
May	65810	11.50	73246	6.51	77831	7.61	86203	5.70	87930	3.72	94015	2.31
Jun	64244	9.48	70057	5.40	77700	8.59	79071	4.13	90446	3.72	89012	2.03
Jul	64612	8.51	74008	4.85	80047	8.86	83211	4.10	91204	3.63	94466	1.99
Aug	65219	7.33	72121	4.98	75306	9.07	80777	3.02	90341	4.55	94959	2.53
Sep	64074	5.43	69776	6.61	74297	8.61	80836	3.36	85553	4.13	94613	3.20
Oct	68272	6.83	71516	11.34	78289	8.88	77307	3.54	87488	4.31	95926	2.57
Nov	60159	6.28	67868	11.64	71005	9.29	75136	3.97	82578	3.40	84204	1.47
Dec	65467	8.12	72277	11.45	76832	9.17	79948	3.80	84572	3.02	87885	1.67
Total	771499		846248		901341		948546		1024079		1064700	

Table 1

Sheet 2/2

ALL INDIA POWER AVAILABILITY MU										Month	CAGR 2010- 18	Growth Rate 2018- 19
2016		2017		2018		2019						
Month	AVAILABILITY	DEFICIT %	AVAILABILITY	DEFICIT %	AVAILABILITY	DEFICIT %	AVAILABILITY	DEFICIT %				
Jan	89731	1.91	91908	0.67	99942	0.63	101161	0.54	Jan	5.99	1.22	
Feb	87562	1.72	86267	0.53	91300	0.66	92912	0.44	Feb	5.63	1.77	
Mar	94625	1.58	98370	0.39	105536	0.83	108355	0.14	Mar	5.71	2.67	
Apr	97290	1.40	101938	0.60	103393	0.60	110112	0.41	Apr	6.12	6.50	
May	98836	0.61	106517	0.73	111590	0.73	120020	0.53	May	6.82	7.55	
Jun	96277	0.58	99636	0.59	108769	0.55	117988	0.49	Jun	6.80	8.48	
Jul	96248	0.40	102117	0.63	109207	0.57	116485	0.63	Jul	6.78	6.66	
Aug	98489	0.53	104905	0.71	112095	0.55	111521	0.53	Aug	7.00	-0.51	
Sep	97835	0.81	101560	0.88	108819	0.70	107515	0.68	Sep	6.84	-1.20	
Oct	95356	0.58	100376	0.94	112175	0.72	97847	0.52	Oct	6.40	-12.77	
Nov	87652	0.74	94506	0.72	98321	0.53	93949	0.45	Nov	6.33	-4.45	
Dec	91160	0.73	96363	0.60	100727	0.55	100281	0.52	Dec	5.53	-0.44	
Total	1131061		1184463		1261874		1278146		Total year	6.34	1.29	

Table 2

ALL INDIA POWER DEMAND MW												
	2010		2011		2012		2013		2014		2015	
Month	PEAK MET	DEFICIT %	PEAK MET	DEFICIT %	PEAK MET	DEFICIT %	PEAK MET	DEFICIT %	PEAK MET	DEFICIT %	PEAK MET	DEFICIT %
Jan	98438	12.50	108212	10.25	110469	11.65	117790	11.40	128094	5.01	135348	3.09
Feb	99822	12.71	108507	10.38	113851	12.43	117366	8.21	129633	4.62	135201	3.00
Mar	104009	12.72	110256	9.84	116191	9.45	120774	8.17	129238	4.73	137678	3.42
Apr	102410	14.26	110899	10.80	117823	9.02	122402	7.36	134972	4.87	132119	3.48
May	103003	12.09	111163	8.91	120444	9.16	126964	6.34	134794	4.98	140296	3.43
Jun	102149	12.47	111198	8.50	123294	8.98	125110	5.78	140633	5.08	137922	2.91
Jul	99762	12.50	114233	8.24	119692	8.22	123726	5.63	141160	3.47	141203	2.41
Aug	102493	10.75	111848	8.08	115882	9.64	126774	3.99	137886	5.53	146124	2.25
Sep	106926	8.67	113676	11.00	118643	10.04	129815	3.95	140647	3.64	148463	3.20
Oct	107286	8.68	112173	11.72	121473	9.38	125629	4.31	139148	4.43	147124	2.44
Nov	104429	7.50	108996	12.75	114988	9.13	123602	3.74	132344	3.56	138726	1.56
Dec	104791	10.71	109209	13.15	115910	10.04	125953	4.05	136527	3.64	135383	1.75
Max. Peak Met	107286		114233		123294		129815		141160		148463	

**Table 2**

ALL INDIA POWER DEMAND MW									Month	CAGR 2010- 18	Growth Rate 2018-19
	2016		2017		2018		2019				
Month	PEAK MET	DEFICIT %	PEAK MET	DEFICIT %	PEAK MET	DEFICIT %	PEAK MET	DEFICIT %			
Jan	135383	1.75	147094	0.78	156720	1.21	162349	1.02	Jan	5.99	3.59
Feb	140408	1.76	149322	0.53	157037	0.93	161422	0.51	Feb	5.83	2.79
Mar	142556	1.64	154148	0.64	160364	1.17	168745	0.34	Mar	5.56	5.23
Apr	149802	2.07	158393	0.57	161286	0.74	176810	0.35	Apr	5.84	9.63
May	149971	0.64	156733	1.93	170765	0.70	182533	0.55	May	6.52	6.89
Jun	148030	0.75	153179	1.52	169942	1.41	182454	0.73	Jun	6.57	7.36
Jul	146289	0.79	154302	1.56	167798	1.34	175124	1.13	Jul	6.72	4.37
Aug	148746	1.63	160752	2.02	170182	1.49	177525	0.25	Aug	6.54	4.31
Sep	156934	1.63	158550	2.40	175528	0.84	173145	0.94	Sep	6.39	-1.36
Oct	153980	0.73	157394	2.86	170604	1.66	164259	0.41	Oct	5.97	-3.72
Nov	148217	0.51	149036	1.57	161678	0.90	155321	0.51	Nov	5.62	-3.93
Dec	144392	0.55	151567	0.82	162609	0.76	170492	0.76	Dec	5.65	4.85
Max. Peak Met	156934		160752		175528		182533		Total year	6.35	3.99



Table 3

Sheet 1/1

POWER POSITION VARIOUS STATES : ENERGY SUPPLIED IN MU																
	RAJASTHAN				PUNJAB				KARNATAKA				TELENGANA			
	2018	2019	Difference	%	2018	2019	Difference	%	2018	2019	Difference	%	2018	2019	Difference	%
<b>May</b>	6869	7100	231	3.4	4945	4786	-159	-3.2	5538	6695	1157	20.9	4622	5283	661	14.3
<b>Jun</b>	6635	7738	1103	16.6	5860	6886	1026	17.5	4934	5791	857	17.4	4335	4804	469	10.8
<b>Jul</b>	6069	7363	1294	21.3	7078	7431	353	5.0	5364	5702	338	6.3	5288	5157	-131	-2.5
<b>Aug</b>	6985	6270	-715	-10.2	7368	7110	-258	-3.5	5450	5026	-424	-7.8	5781	5988	207	3.6
<b>Sep</b>	6201	6867	666	10.7	5575	6721	1146	20.6	5693	5218	-475	-8.3	6272	5325	-947	-15.1
<b>Oct</b>	6743	6,124	-619	-9.2	4214	4,063	-151	-3.6	5750	4,637	-1113	-19.4	6601	4,955	-1646	-24.9
<b>Nov</b>	6722	6,326	-396	-5.9	3161	3,042	-119	-3.8	6087	5,196	-891	-14.6	5491	5,146	-345	-6.3
<b>Dec</b>	7227	6,967	-260	-3.6	3616	3,446	-170	-4.7	6340	6,026	-314	-5.0	5295	6,133	838	15.8

POWER POSITION VARIOUS STATES : ENERGY SUPPLIED IN MU																
	GUJARATH				MAHARASHTRA				MADHYAPRADESH				ODISHA			
	2018	2019	Difference	%	2018	2019	Difference	%	2018	2019	Difference	%	2018	2019	Difference	%
<b>May</b>	10572	11026	454	4.3	15200	14989	-211	-1.4	6006	6720	714	11.9	2989	2603	-386	-12.9
<b>Jun</b>	10182	9967	-215	-2.1	12696	13420	724	5.7	5167	6230	1063	20.6	3072	2691	-381	-12.4
<b>Jul</b>	8745	10076	1331	15.2	11947	12151	204	1.7	5082	5845	763	15.0	2606	2834	228	8.7
<b>Aug</b>	9491	8441	-1050	-11.1	12516	11849	-667	-5.3	5315	5493	178	3.3	3130	2908	-222	-7.1
<b>Sep</b>	10122	8438	-1684	-16.6	13612	11411	-2201	-16.2	5491	5099	-392	-7.1	2918	2819	-99	-3.4
<b>Oct</b>	11177	9,079	-2098	-18.8	15118	11,909	-3209	-21.2	7493	5,326	-2167	-28.9	3211	2,487	-724	-22.5
<b>Nov</b>	9001	8,855	-146	-1.6	13056	12,077	-979	-7.5	7771	6,710	-1061	-13.7	2662	2,108	-554	-20.8
<b>Dec</b>	9400	9,550	150	1.6	12504	13,265	761	6.1	7903	7,152	-751	-9.5	2251	2,170	-81	-3.6

Table 4

Sheet 1/1

POWER POSITION VARIOUS STATES : PEAK DEMAND MET IN MW																
	RAJASTHAN				PUNJAB				KARNATAKA				TELANGANA			
	2018	2019	Difference	%	2018	2019	Difference	%	2018	2019	Difference	%	2018	2019	Difference	%
May	11298	11791	493	4.4	8920	8850	-70	-0.8	9778	12158	2380	24.3	7752	8684	932	12.0
Jun	11698	12620	922	7.9	12377	13149	772	6.2	8991	11490	2499	27.8	7616	8355	739	9.7
Jul	11057	12351	1294	11.7	12638	13606	968	7.7	9484	10496	1012	10.7	10429	9468	-961	-9.2
Aug	11354	10699	-655	-5.8	12012	12009	-3	0.0	9464	10440	976	10.3	10198	11703	1505	14.8
Sep	10612	11553	941	8.9	11405	11825	420	3.7	10090	10466	376	3.7	10815	9749	-1066	-9.9
Oct	11450	10,533	-917	-8.0	7990	7,348	-642	-8.0	10766	9,090	-1676	-15.6	10600	8,532	-2068	-19.5
Nov	11809	11,980	171	1.4	6071	5,503	-568	-9.4	11233	10,670	-563	-5.0	9735	9,408	-327	-3.4
Dec	13276	13,464	188	1.4	6440	6,720	280	4.3	11230	12,803	1573	14.0	9019	11,182	2163	24.0

POWER POSITION : PEAK DEMAND MET IN MW																
	GUJARATH				MAHARASHTRA				MADHYAPRADESH				ODISHA			
	2018	2019	Difference	%	2018	2019	Difference	%	2018	2019	Difference	%	2018	2019	Difference	%
May	15855	18094	2239	14.1	23254	23613	359	1.5	8745	10131	1386	15.8	4615	4606	-9	-0.2
Jun	16327	18424	2097	12.8	21703	22912	1209	5.6	8366	10180	1814	21.7	4652	4949	297	6.4
Jul	14569	17577	3008	20.6	19327	20561	1234	6.4	7664	10097	2433	31.7	4526	4861	335	7.4
Aug	9491	14599	5108	53.8	12516	20250	7734	61.8	5315	8777	3462	65.1	5357	4856	-501	-9.4
Sep	16963	14487	-2476	-14.6	22349	18793	-3556	-15.9	8771	8887	116	1.3	4906	5292	386	7.9
Oct	16606	16,499	-107	-0.6	23159	20,750	-2409	-10.4	11496	8,820	-2676	-23.3	5219	4,656	-563	-10.8
Nov	14610	15,992	1382	9.5	22378	21,471	-907	-4.1	10007	13,147	3140	31.4	4516	4,026	-490	-10.9
Dec	14272	16,097	1825	12.8	21089	22,403	1314	6.2	13215	14,623	1408	10.7	4042	4,453	411	10.2

## **References**

<sup>1</sup> Source: <https://www.cea.nic.in/wings/pdm>

<sup>2</sup> Source: <https://economictimes.indiatimes.com/news/economy/indicators>

<sup>3</sup> Source: InSDES compilation based on details available at  
<https://www.cea.nic.in/executivesummary> and  
[https://www.cea.nic.in/reports/reports archives/monthly report archive](https://www.cea.nic.in/reports/reports%20archives/monthly%20report%20archive)